

Trimming the Tea Towel

©2011 Laura Conowitch

<http://www.lcscottage.com>



Supplies:

- 1 plain tea towel
- 1 strip of fabric (6" wide x width of fabric)
- 1 accent strip of fabric (2" x width of fabric)
- The usual...thread, sewing machine, etc.

The picture shows two sets of strips on a white towel because I am making two towels. Also, I would like my strips to be wider, but I didn't have a wider strip of this Christmas fabric to use. Read the tutorial through, and then decide how wide you'd like your trim to be. Your personal preference, and the amount of fabric you have in your stash, will determine how wide to cut your strips. Also, your strips don't have to be cut by the width of the fabric, but they must extend several inches beyond the length of your tea towel.

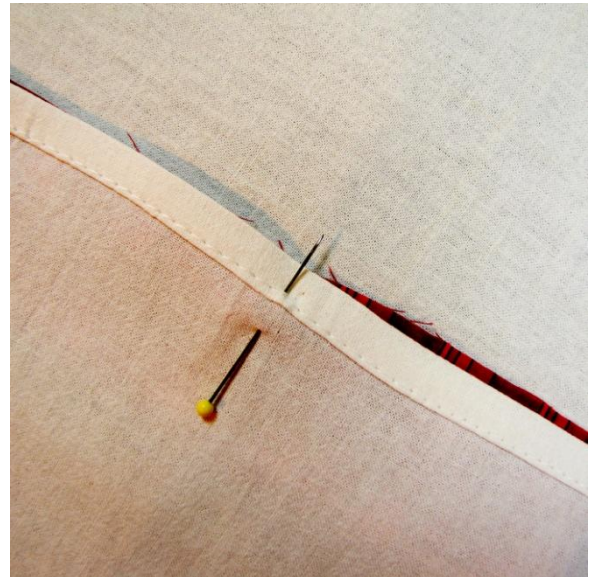


1. With right sides together, stitch the accent strip to the band. Press the seam towards the accent strip. In the photo the pressing is not done.



2. Press a generous $\frac{1}{4}$ " to $\frac{1}{2}$ " hem on the raw edge of the band.

3. Pin the accent strip to the tea towel with right sides together. You may want to find the center of each so that you are sure that the band will extend over both edges of the tea towel.
4. Sew the band to the tea towel. I don't worry about the tea towel's hem. I sew just beyond it so that the hem will be enclosed in the band.



Be sure to sew right out to the edge of the band. Use the stitching line to press a hem to the wrong side of the accent strip. The pin means nothing in the photos. I don't know why I put it there...maybe it's my pointer?



5. Fold band ends in half right sides together and pin.
6. Stitch the ends.
7. Trim the ends. I used pinking shears, but you could trim and zig-zag finish the edge.



8. Turn the band right side out.
9. Press, and pin the band to the tea towel.

I like to re-pin so that the pins are on the front, making sure they have secured the band to the tea towel on the back, and that the previous stitching is covered by the band.



10. Topstitch in the ditch (the seams) of the accent strip, as shown in the front and back photos below. Ta da!

